



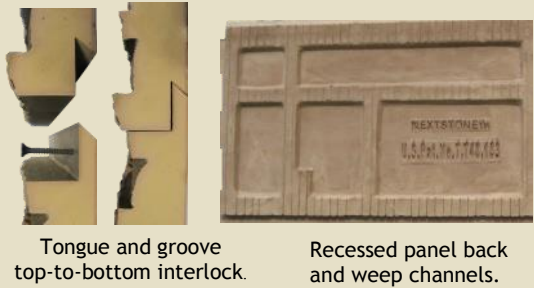
*No Mason  
No Mortar  
No Mess!*

*Insulated and Lightweight Easy Install  
Faux Stone Siding Panels and Accessories*





**NextStone™** is a uniquely formulated polyurethane with UV inhibitors and fire retardants. The proprietary in mold coatings are chemically bonded with the molded surface of the panel. Panels are easily cut, no special tools required. The screw strip acts as a guide for attachment and is covered by the overlap of the next panel. NextStone's patented interlock and weep channel technology provide a realistic finish with outstanding durability. Backed by a 20 year warranty.



U. S. Pat. No. 7,748,183

**NextStone™ Castle Rock Panel**

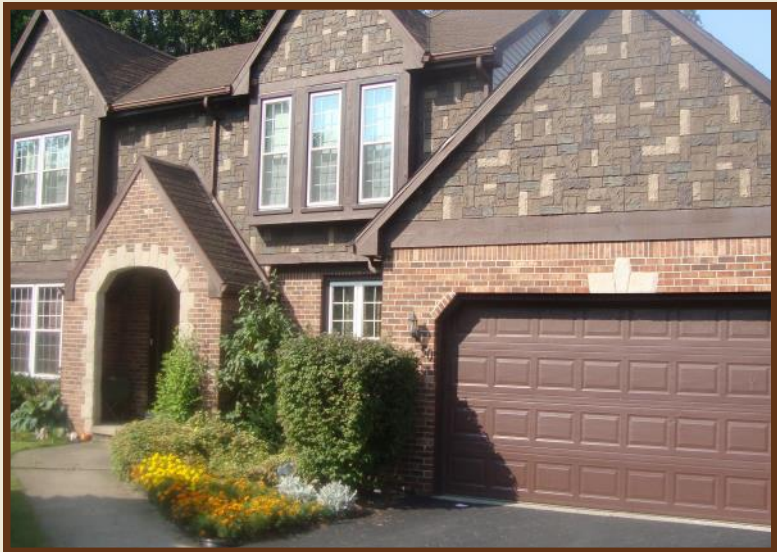
Available in six designer colors. Castle Rock panels are 15¼" x 43¼" x 1 ¼" and cover 4.03 square feet. Stones vary from 3" to 11" in height.



Windsor Buff Panel



Canterbury Red



Castle Rock Tuscan Brown



Tudor Gray



Ashford Charcoal



Tuscan Brown



Berkshire Buff



## **NextStone™** Slatestone Panel

Available in eight designer colors. Panel dimensions are 8 ¼" x 43" x 1 ¾" and cover 2.14 square feet. Stones vary from ⅝" to 2 ⅛" in height.



**Midnight Ash  
Panel**



**Brunswick Brown**



**Arizona Red**



**Sahara**



**Pewter**



**Rocky Mountain Graphite**



**Onyx**



**Rundle Ridge**



*Slatestone Pewter*



## **NextStone™** Stacked Stone Panel

Available in six designer colors. Stacked Stone panels are 13¼" x 46 ½" x 1 ½" and cover 3.63 square feet. Stones vary from ¾" to 1 ¾" in height.



**Kentucky Gray Panel**



**Carolina Cocoa**



*Stacked Stone Kentucky Gray*



**Sandy Buff**



**Bedford Charcoal**



**Volcanic Gray**



**Walnut Brown**



## **NextStone™** Random Rock Panel

Available in six designer colors. Random Rock panels are 15½" x 48" x 1½" and cover 4.75 square feet. Stones vary from 3 1/2" to 7 1/2" in height.



Tri Gray Panel



*Random Rock Tri Gray*



New England Mocha



Sedona Red



Desert Buff



Tri Buff



Mountain Shadow

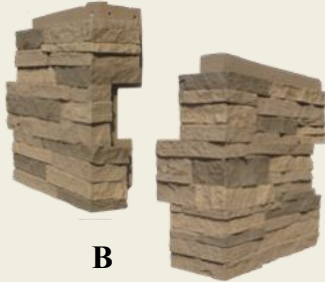


**Flush Outside Corners** interlock with panels for a wrap around look.

- A) **Random Rock Outside Corner** 7" x 11" x 15 ½"
- B) **Stacked Stone Flush Outside Corner** 13 ¾" x 4 ¼" x 13 ¼" (2 pieces shown)
- C) **Slatestone Outside Corner** 12 ¾" x 4 ½" x 8 ¼" (2 Pieces Shown)
- D) **Castle Rock Outside Corner** 7" x 11" x 15 ¼" (2 Pieces Shown)



A



B



C



D

All corners packaged in sets of 4 corners, 2 left and 2 right.

**Caulk Free Corners** extend out from the wall and have a solid Sandstone finish that will match other Sandstone accessories. Corners can either be stacked or finished with Ledger and Ledger Corners.

- A) **Sandstone Outside Corner** 5 ½" x 5 ½" x 48"
- A bold accented Corner. Panels will sit behind the corner.  
Colors: Brown, Buff, Charcoal, Graphite, Gray, Onyx, Red

- B) **Sandstone Flush Outside Corner** 3" x 3" x 48"
- Corner sits flush to panel ends.  
Colors: Brown, Buff, Charcoal, Gray, Onyx, Red

- C) **Sandstone Inside Corner** 3 ½" x 3 ½" x 48"
- An accented Inside Corner. Panels will sit behind corners.  
Colors: Brown, Buff, Charcoal, Graphite, Gray, Onyx, Red



*Sandstone Inside Corner Buff  
with Random Rock Tri Buff  
panels*



*Sandstone Flush Outside Corner  
Gray with Random Rock Tri Gray  
Panels*



*Sandstone Outside Corner Buff  
with Random Rock Desert Buff  
Panels*



*Slatestone Outside Corner Midnight Ash  
with Slatestone Midnight Ash Panels*

## Sandstone Ledger and Ledger Corners

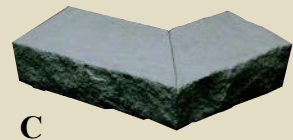
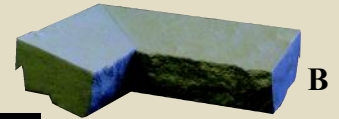
Provides a sloped sill for water run-off and a traditional look to finish off a wainscot or other sill applications.

**A) Ledger** 2 ½" x 4" x 48"

**B) Ledger Inside Corner** 9 ¾" x 7 ⅝" x 2 ½"

**C) Ledger Outside Corner** 4 ¼" x 6 ¼" x 2 ½"

Colors: Brown, Buff, Charcoal, Graphite, Gray, Onyx, Red



## Sandstone Window and Door Trim

2 ¼" x 3 ½" x 48"

Can be used around doors and windows or to terminate a NextStone™ panel application.

Colors: Brown, Buff, Charcoal, Graphite, Gray, Onyx, Red



## Large and Small Accent Rocks

Adds a vertical dimension to the Random Rock panels.

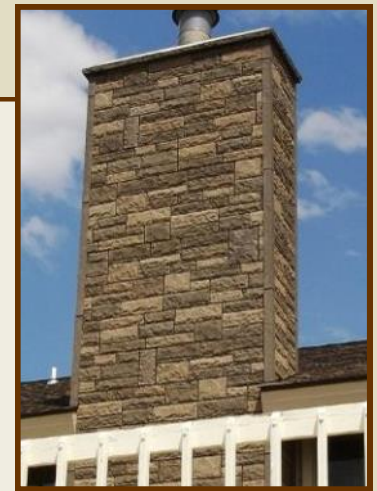
Available in all Random Rock colors.

**Small Accent Rock** 7" x 15½" x 1 ½"

(set of all 3 equals 2.26 square feet)

**Large Accent Rock** 11 ½" x 15 ½" x 1 ½"

(set of all 3 equals 3.71 square feet)



*Random Rock Tri Gray  
With Accent Rocks*

## Mounting Blocks

Used behind hose bibs, electrical boxes, light fixtures, exterior lights or address block to provide a flush mounting surface and watertight installation.

**Large Mounting Blocks** 10" x 13" x 2 ¼"

**Small Mounting Blocks** 8" x 9" x 2 ¼"

Colors: Brown, Buff, Charcoal, Graphite, Gray, Onyx, Red



## Starter Strip

Start and lock in the first course of panels.



## Touch-Up Paint Kit

Finish cut ends and cover surface damage. Available in all colors.



## Grout

Simulated mortar grout for sealing miter joints and general touch up.

Colors: Buff, Gray, Red



## 16" Columns using Flush Outside Corners

### R) Slatestone 16" Column (4 Left or 4 Right corners per course)

Each course of 4 corners creates a 16" x 16" x 7 1/8" frame. In all Slatestone colors.

### S) Random Rock 16" Column (4 Left or 4 Right corners per course)

Each course of 4 corners creates a 16" x 16" x 15 1/2" frame. In all R. Rock colors.

### T) Castle Rock 16" Column (4 Left or 4 Right corners per course)

Each course of 4 corners creates a 16" x 16" x 15 1/2" frame. In all Castle Rock colors.

### U) Stacked Stone 16" Column (4 Left or 4 Right corners per course)

Each course of 4 corners creates a 16" x 16" x 12" frame. In all Stacked Stone colors.

### V) 18" Cap- 18" x 18" x 3 1/2" Brown, Buff, Charcoal, Graphite, Gray, Onyx, Red

(Shown on each column below) (see the NextStone™ Install Manual for Details)



## 30" Slatestone Column Wrap (4pcs)

16" x 16" x 30"

Available in all Slatestone Colors

18" Cap- 18" x 18" x 3 1/2" Brown, Buff, Charcoal, Graphite, Gray, Onyx, Red



4 Finger  
Jointed Panels



30" Slatestone  
Column Wrap  
Pewter with 18"  
Gray Cap



30" Slatestone Column Wrap  
Midnight Ash with 18" Charcoal Cap



## Slatestone Post Covers

### A) 1 piece Post Covers

fit over either 4x4 posts or 6x6 posts.

### B) 2 piece Post Cover

fit over either 4x4 posts or 6x6 posts.

Posts are approximately 8 " x 8 " x 41"

Available in all Slatestone colors

### C) Post Cover Caps Fits over all Post Covers.

Caps are 10 ½ " x 10 ½" x 3"

### D) 4 Pc converter kit. Inside dimensions: 3 ½" x 3 ½"

Used when attaching Post Cover to 4x4 post.

### E) Down Light Kit

### F) Cap Light Kit

A



*1 pc Post Cover  
Arizona Red with Red Post  
Cover Cap*

B



*2pc Post Cover Pewter*

C



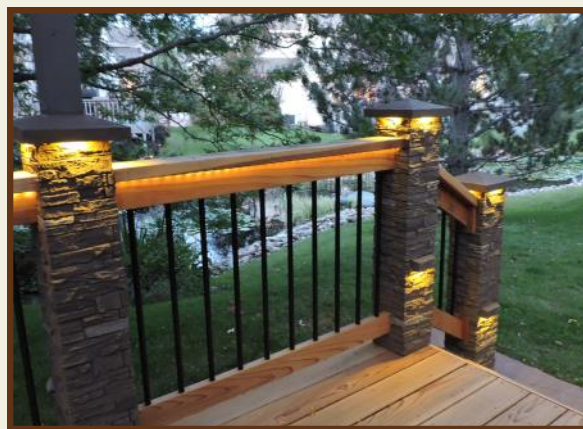
D



E



F



*Brunswick Brown Post Cover and Brown Caps with  
Cap Light Kits and Down Light Kits*



**Brunswick  
Brown**



**Arizona  
Red**



**Pewter**



**Onyx**



**Sahara**



**Rundle  
Ridge**



**Midnight  
Ash**



**R.M.  
Graphite**

Note: Post Covers will not fit a TRUE 6x6 Post. Inside Dimensions: 5 ½"x 5 ½"



## Mailbox Kits and Pillars with Solar Lighting

Real stone look with Solar lighting and Easy Installation. Accent a driveway, entryway or walkway with this enclosure. Visit [www.NextStone.com](http://www.NextStone.com) for complete styles, color selection, availability and installation instructions.



Available in all 8  
Slatestone Colors



Before  
&  
After



- Easy Installation
- **Great Do It Yourself** project
- Available in all Random Rock and Slatestone Colors

- Kits Include Solar Light Kit
- LED Down-lights in the Cap and Address Plaque
- Designer Metal Locking Mailbox and Flag
- Adds value to Home
- Installs Over Standard 4 x 4 Post
- All Hardware included

Solar Collector  
Included in Cap  
will Power all  
LED Cap Lights  
and Address  
Plaque Lights



Looks Great,  
Day And Night!



**22" Pillar 22" x 22" x 52"**  
Available in certain Random Rock  
colors.



# NextStone™ Product Test Data

NextStone™ has conducted extensive testing on its products and proprietary coating system. The details and results of the testing are as follows:

## NextStone™ Hardness / Adhesion Test

**Test Purpose:** The hardness / adhesion of the coating to the substrate depends on the process used to finish the substrate, the coating thickness and the drying of the coating.

**Test Results:** Minimum hardness requirements based on anticipated use were met. Required class for adhesion was also met.

## NextStone™ Xenon Test

**Test Purpose:** In the natural environment, rupture may occur due to the factors of temperature, humidity, sunlight and oxidation resulting in the color, gloss, hardness, adhesion and flexibility of the coating being changed. We use the ARC Artificially Accelerated aging test to measure the weathering resistance of the coating.

**Test Results:** No evidence of surface deterioration, surface shrinkage, objectionable color or gloss change, delimitation, lifting, cracking, pitting, blistering or other degradation.

## NextStone™ Salt Spray Test

**Test Purpose:** Rusting, bubbling and fading can occur due to salt spray on all materials. This is especially true when the product is used around the seaside, at the beach and in industrial districts which have high strength salt spray (fog).

**Test Results:** No rusting, bubbling or fading occurred.

## NextStone™ Hot / Cold Cycle Test

**Test Purpose:** The process for the hot / cold cycle test is as follows: The total cycle time is 5-10 cycles. The sample is put at a constant temperature of -20 degrees C for two hours and then at 50 degrees C constant temperature for 2 hours. The sample is then visually inspected for cracks, blistering or other visible damage.

**Test Results:** No cracking, blistering, etc was observed.

## NextStone™ QUV Test

**Test Purpose:**

1. Place the sample panel in the QUV test machine and

## Additional Panel Test Data

**Structural Performance per ASTM E330-02**

Excellent results for both Positive and Negative Wind Load.

**Flame Spread per ASTM E-162 - Pass- Report # 87712-2**

**Colorfastness Test per ANZI Z124—No Color Change.**

**Report #87712-1**

*Full copy of all reports available upon request*



*Random Rock Mountain Shadow*

**NextStone.com**





# NextStone™ Specifications

This Specification Guide is intended to be used in the preparation of specifications for a particular project or as the basis of an office master specification. In either case, it should be edited to meet actual conditions and needs.



*Stacked Stone Kentucky Gray*



*Slatestone Midnight Ash*



*Random Rock Tri Gray*

## Part 1-General

- 1.01 Scope of Work: Furnish required material, labor, and equipment for complete installation of NextStone™ panels and related work shown on drawings or specified herein.
- 1.02 NextStone™ Rock Face Paneling.
- 1.03 Manufacturer: NextStone™, P.O. Box 39914 Denver, CO 80239 Toll Free: (866) 371-8232 [NextStone.com](http://NextStone.com)
- 1.04 Submittals: Submit panel samples showing profile, size and color for approval prior to commencing work.
- 1.05 Composition of Material: NextStone™ products are made of uniquely formulated composite polyurethane, incorporating UV inhibitors and fire retardants.

## Part 2-Materials of Construction

- 2.01 Materials: Handle and store panels according to manufacturer's instructions. Panels are installed with good quality deck screws (ceramic coated or stainless steel are recommended) and/or a high quality polyurethane based adhesive such as PL Premium Polyurethane Construction Adhesive. Concrete screws (Tapcon) are recommended for applications to concrete or cinder.
- 2.02 Other Materials: Use Touch-Up paint and Grout as provided by NextStone™.

## Part 3-Installation Workshop

- 3.01 Inspection: Prior to commencing work, verify governing dimensions of building. Examine substrate flaws and defects.
- 3.02 Preparation: All substrate flaws and defects must be corrected prior to panel installation. Walls must be in plane and clear to receive siding.
- 3.03 Field Inspection: Upon installation completion, visually inspect for defective installation and manufacturing defects. Repair as necessary.
- 3.04 Clean Up: When panel installation is complete, clean panels with low pressure water to remove all foreign debris. Remove all packaging and remaining material from job site.

**Technical Services:** NextStone™, P.O. Box 39914, Denver, CO 80239, Phone: (303) 371-8232

**20 Year Limited Warranty:** See our web site [NextStone.com](http://NextStone.com) for details.

Follow us on Twitter  
Like us on Facebook



# NextStone.com



U.S. Patent Number 7,748,183

Colors shown are reproduced by the lithographic process and may vary from actual colors. **Consult product samples for color accuracy.** NextStone™ reserves the right to delete or change items in its product line without notice. Sizes shown are approximate. Coverage area could vary. USGBC and the related logo is a trademark owned by the U.S. Green Building Council and is used with permission.

REV. 11.30.15